



Comprehensive Plan



Franklin Forward

2025 Comprehensive Plan

This comprehensive plan is an overall guide for development, land use, economic progress and the preservation of the quality of life in Franklin County. This plan update seeks to evaluate the physical and policy influences of growth over the past decade; build opportunities for continued and increased collaboration; and outline a realistic series of actions that are desirable and achievable for the coming years.

The Franklin County Commissioners authorized an update to the comprehensive plan in 2010. The previous plan was adopted in 1999.

The strategies for growth over the coming decade are defined in this comprehensive plan.

A broad range of county-wide pursuits are identified.

Implementation of the recommendations will occur in the next 10+ years. Some concepts can be realized quickly while others may become building blocks for longer-term initiatives.

The Pennsylvania Municipalities Planning Code recommends that comprehensive plans be updated every 10 years. During that time significant change can, and often does, occur.



Mission and Goals

Going forward, we aim to achieve our mission and goals.

Mission

In setting the course for our future, we look to...

Promote continued prosperity, stability and quality of life for residents.

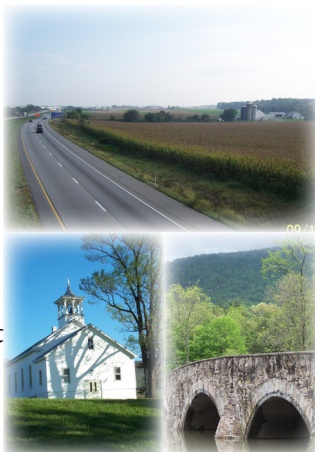
Preserve the county's heritage of small towns, rural areas and memorable views.

Encourage a collaborative approach to planning initiatives.

Focus Areas

In addressing the future of our county, we focused on these areas:

- Outreach and Communication
- Land Use and Housing
- Resource Management
- Economic Development
- Built Environment



Goals

In seeking to realize our vision of Franklin County, our goals are to:

Engage in outreach, education, communication and cooperation within the county.

Foster the continued livability and success of urban communities and of communities embedded in the rural landscape.

Facilitate the protection and promotion of the county's rich natural resources, recreation opportunities and history.

Promote economic opportunities while retaining agriculture and community character.

Use a balanced approach in the development of transportation, infrastructure and energy systems.

For more information:

Franklin County Planning Commission
218 N. Second Street, Chambersburg, PA 17201
Phone: (717) 261-3855 Website: www.franklincountypa.gov

Looking Forward: Land Use and Housing

Going forward, we need to continue coordinating land use and housing patterns.



Land Use and Housing Goal: Foster the continued livability and success of urban communities and of communities embedded in the rural landscape.



Essential Action

Advocate for responsive, compatible land use decisions

Pilot Project: Champion for locally implemented land use strategies that promote balanced growth and conservation.

Aim to Achieve: Promote conservation of quality farmland, prime agricultural soils and the livability of communities embedded in rural landscapes. Emphasize agriculture and its supporting industries as identifying characteristics and stability of the county's future.

How to Get There: Continue to encourage multi-municipal planning and facilitate workshops of the Franklin County Planning Department, the Franklin County Area Development Corporation, the Franklin County Agriculture Land Preservation Board, the Franklin County Redevelopment Authority, school districts and municipalities.

Partners to Put in Motion: Municipalities, Franklin County Planning Department, Franklin County Area Development Corporation, and school districts.

Strategies

To meet our goal, we will use the following strategies:

Champion for local land use controls that promote balanced growth and conservation.

Promote conservation of quality farmland and prime agricultural soils.

Support revitalization of core communities.

Work with landowners to ensure prompt and sufficient reforestation of woodlands that have been timbered.

Encourage homeownership.



A comprehensive plan is rooted in land use and housing strategies. Franklin County is unique in Pennsylvania. For a population that has grown at one of the highest percentages in the Commonwealth over the past decade, there is little evidence of sprawl. There are a number of different landscapes throughout the county.

Core Communities are established along major crossroads and are essentially built-out.

Suburban Non-Residential areas are primarily larger-scale commercial, industrial and technology developments.

Suburban Residential areas are a series of extensions from core communities and village centers.

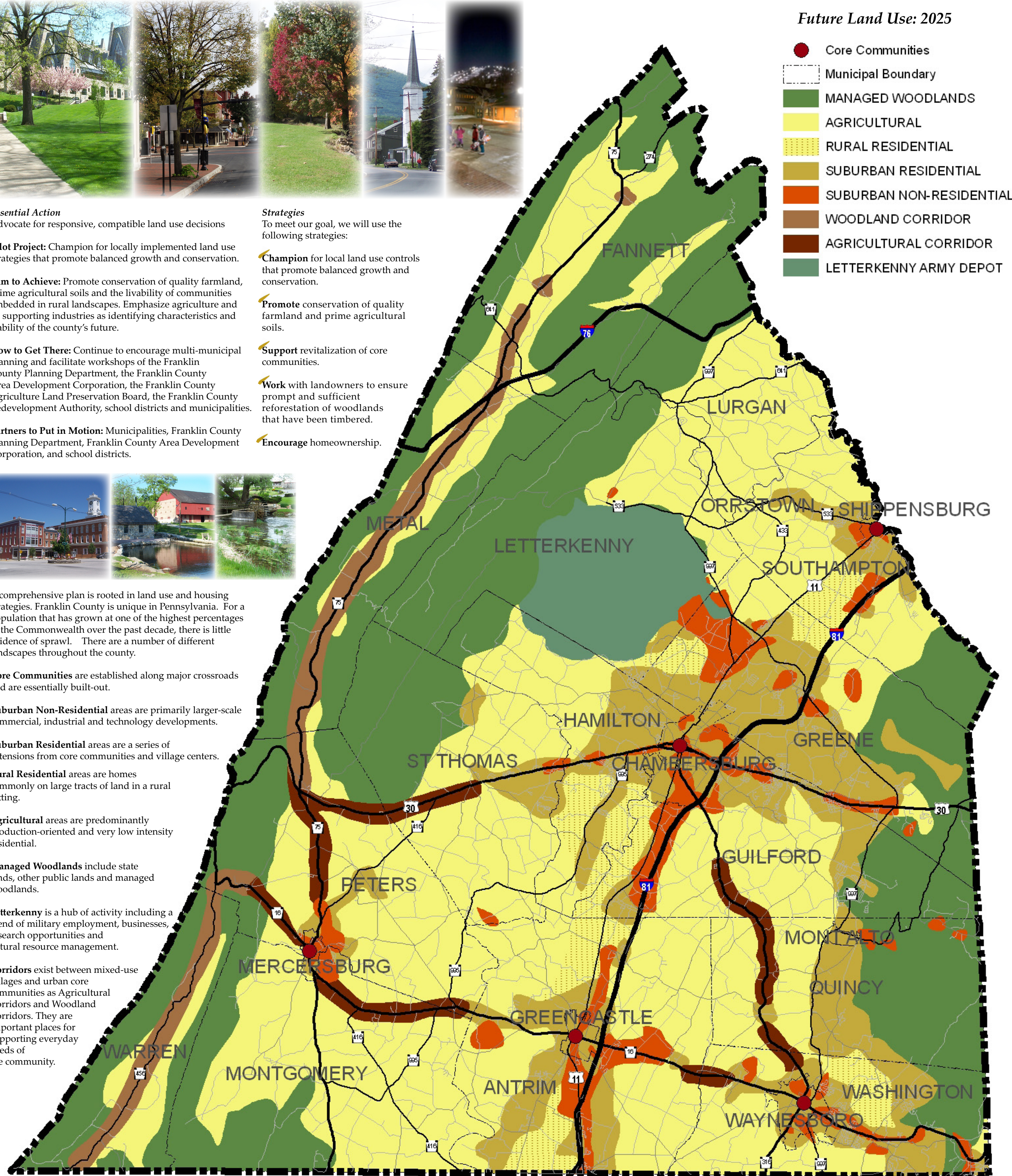
Rural Residential areas are homes commonly on large tracts of land in a rural setting.

Agricultural areas are predominantly production-oriented and very low intensity residential.

Managed Woodlands include state lands, other public lands and managed woodlands.

Letterkenny is a hub of activity including a blend of military employment, businesses, research opportunities and natural resource management.

Corridors exist between mixed-use villages and urban core communities as Agricultural Corridors and Woodland Corridors. They are important places for supporting everyday needs of the community.



Forward Thinking: Outreach and Cooperation

Going forward, we need to continue strengthening partnerships and cooperation.

 **Outreach and Cooperation Goal:** Engage in outreach, education, communication and cooperation within the county.

Essential Action
Launch the County Planning Department’s Resource Center

Pilot Project: Establish a resource center to provide access to the county’s GIS mapping, planning reference/data, model ordinances and up-to-date, pertinent information.

Aim to Achieve: As the county enhances its outreach role as a facilitator for local, regional and/or county planning initiatives, its ability to provide easy access to relevant, helpful information will be paramount to its effectiveness.

How to Get There: Outline the products, the media and the protocol needed for the creation and up-keep of a resource center. Create a platform for electronic access that represents the technological innovation found throughout the county.

Partners to Put in Motion: Franklin County Planning Department, institutions of higher education (computer science, geography, etc.) and municipalities.

Strategies
To meet our goal, we will use the following strategies:

Promote the Planning Department’s role as a facilitator and orchestrator of municipal cooperation and as a clearinghouse of information, knowledge and contacts.

Proactively encourage municipalities to cooperate to find solutions for regional issues; strengthen the dialogue between governments while reinforcing the successes of government and private partnerships.

Determine how the county may further its partnerships with neighboring counties.


Provide sufficient levels of staffing within the Planning Department for education, outreach implementation of multi-municipal initiatives as needed.

Coordinate with public and private sector entities to promote the benefits of coordinated planning and public health.

Evaluate the applicability and potential impacts of creating Official Maps.

Foster Forward: Resource Management

Going forward, we need to advance conservation and continue funding agriculture preservation.

 **Resource Management Goal:** Facilitate the protection and promotion of the county’s rich natural resources, recreation opportunities and history.

Essential Action
Celebrate why the county’s unique assets are essential to its long-term vitality.

Pilot Project: Establish an annual campaign that highlights the value of identified natural resources, recreation resources and historical features and how the assets contribute to future successes in the county.

Aim to Achieve: More than just a simple recognition, this celebrated features campaign is aimed to encourage dialogue and collaboration among groups and individuals throughout the county that lasts all year long. The initiative seeks to tie how conservation, improvement and/or enhancement of identified assets are essential to furthering economic wellbeing, cultural appreciation and healthy communities. The initiative also seeks to bring awareness (planning and otherwise) of these commonly shared resources to residents of all ages and businesses throughout the county.

How to Get There: Determine a featured unique asset each year that encompasses one or more of the resources in the county: natural, recreation and/or history.

Strategies
To meet our goal, we will use the following strategies:


Continue the funding of agriculture preservation initiatives.

Support preservation of sensitive natural resources.

Encourage strategies and/or policies that emphasize conservation of existing county character: small towns, rural areas and positive, memorable views.

Fast Forward: Economic Development

Going forward, we need to embrace and provide development opportunities.

 **Economic Development Goal:** Promote economic opportunities while retaining agriculture and community character.

Essential Action
Expand and reinforce how the county’s technical planning tools contribute to economic development efforts.

Pilot Project: Integrate measurable quality of life indicators and other data into the mapping/information that the county provides to further assist others as they recruit, maintain and nurture employment opportunities throughout the county.

Aim to Achieve: Illustrate up-to-date patterns and trends that are relevant to different industries from manufacturing to agriculture.

How to Get There: Outline the types of issues and concerns that would impact potential developments (e.g. commuter patterns for industrial development; stream quality for agricultural development). Determine how this information can be presented to communicate the county’s assets and strengths to potential investors.

Partners to Put in Motion: Franklin County Planning Department, Franklin County Area Development Corporation, Chambers of Commerce and Downtown organizations.

Strategies
To meet our goal, we will use the following strategies:

Continue cooperation with the Franklin County Area Development Corporation in implementing a comprehensive economic development strategy; continue to encourage multi-municipal planning.

Continue to emphasize agriculture and its supporting industries as the stability of the county’s future.

Work to facilitate and encourage business, industry and manufacturing in the county.


Foster a quality-of-life attractive to a plentiful, skilled workforce.

Continue to develop and implement fiscally responsible budgets that balance needed public services with available funding levels.

Encourage tourism-oriented initiatives.

Moving Forward: Transportation and Infrastructure

Going forward, we need to promote balanced growth with transportation and infrastructure investments.

 **Built Environment Goal:** Use a balanced approach in the development of transportation, infrastructure and energy systems.

Essential Action
Promote multi-municipal and region-based transportation and infrastructure enhancements.

Pilot Project: Develop and implement criteria and a ranking system associated with the allocation of project funding.

Aim to Achieve: Support broader-scale transportation and infrastructure planning efforts that are consistent with strategies throughout the comprehensive plan.

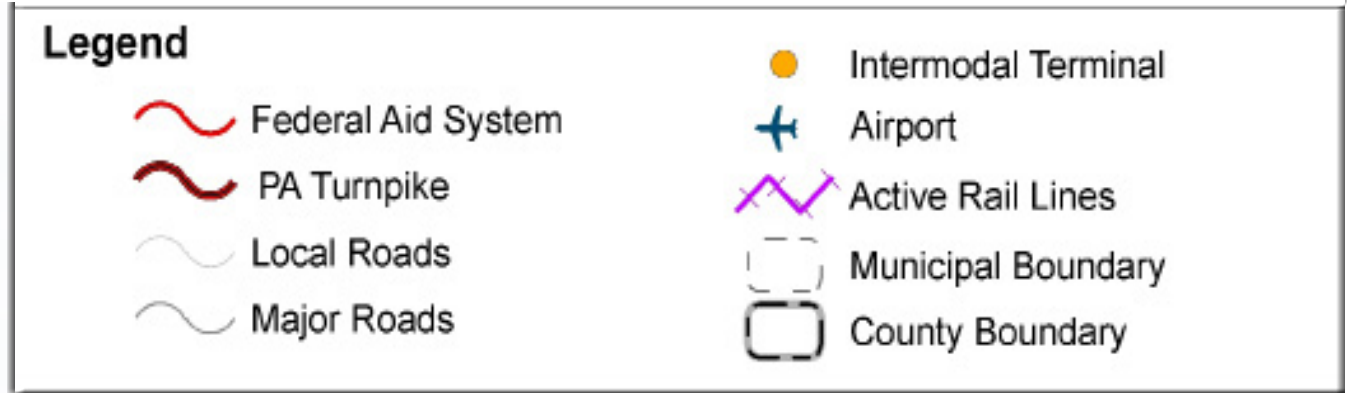
How to Get There: Outline criteria to further administer the distribution of monies for local and regional-scale projects. Evaluate proposed projects using the criteria in context of the comprehensive plan to ensure that funded projects are in line with the county’s vision for broad-scale transportation and infrastructure planning. Assess potential project funding using the criteria to determine compatibility with the county’s vision.

Partners to Put in Motion: Franklin County Planning Department, Metropolitan Planning Organization and municipal authorities.

The Franklin County Metropolitan Planning Organization (MPO) is the decision-making entity responsible for prioritizing and funding transportation projects throughout the County. The transportation element of the Comprehensive Plan and the MPO’s Long-Range Transportation Plan (LRTP) are integrated in order to identify existing and future needs and determine the right transportation investments for the next 20 years. It is the primary policy document for making transportation decisions that will influence and impact the County’s future. The LRTP provides a detailed analysis of existing conditions and trends relating to all transportation modes and an action plan that outlines a fiscally constrained approach for meeting the goals for the future Franklin County transportation system.

Eight policy goals guide the LRTP:

- | | | | |
|---|---|---|---|
| 1. Emphasize the preservation of the existing transportation system. | 3. Increase the safety and security of the transportation system for motorized and non-motorized users. | 5. Increase the accessibility and mobility options available to people and for freight. | 7. Enhance the integration and connectivity of the transportation system. |
| 2. Encourage an integrated transportation and land use planning process throughout Franklin County. | 4. Support the economic vitality of the metropolitan area. | 6. Promote efficient system management and operation. | 8. Protect and enhance the environment. |



Transportation Network
PERRY COUNTY

