

Trauma:

A Public Health Issue

Prevalence:

Trauma is common among adults and children in social service systems.

98%

of **female offenders** have experienced **trauma**, often interpersonal trauma and domestic violence



96%

of **adolescent psychiatric inpatients** have histories of **exposure to trauma**



93%

of **homeless mothers** have a **lifetime history of interpersonal trauma**



90%

of **juvenile justice-involved youth** have experienced trauma, often **multiple traumas from an early age**



75%

of **adults in substance abuse treatment** report histories of trauma



70%

of **children in foster care** have experienced multiple traumas



Goal:

Trauma-Informed Systems

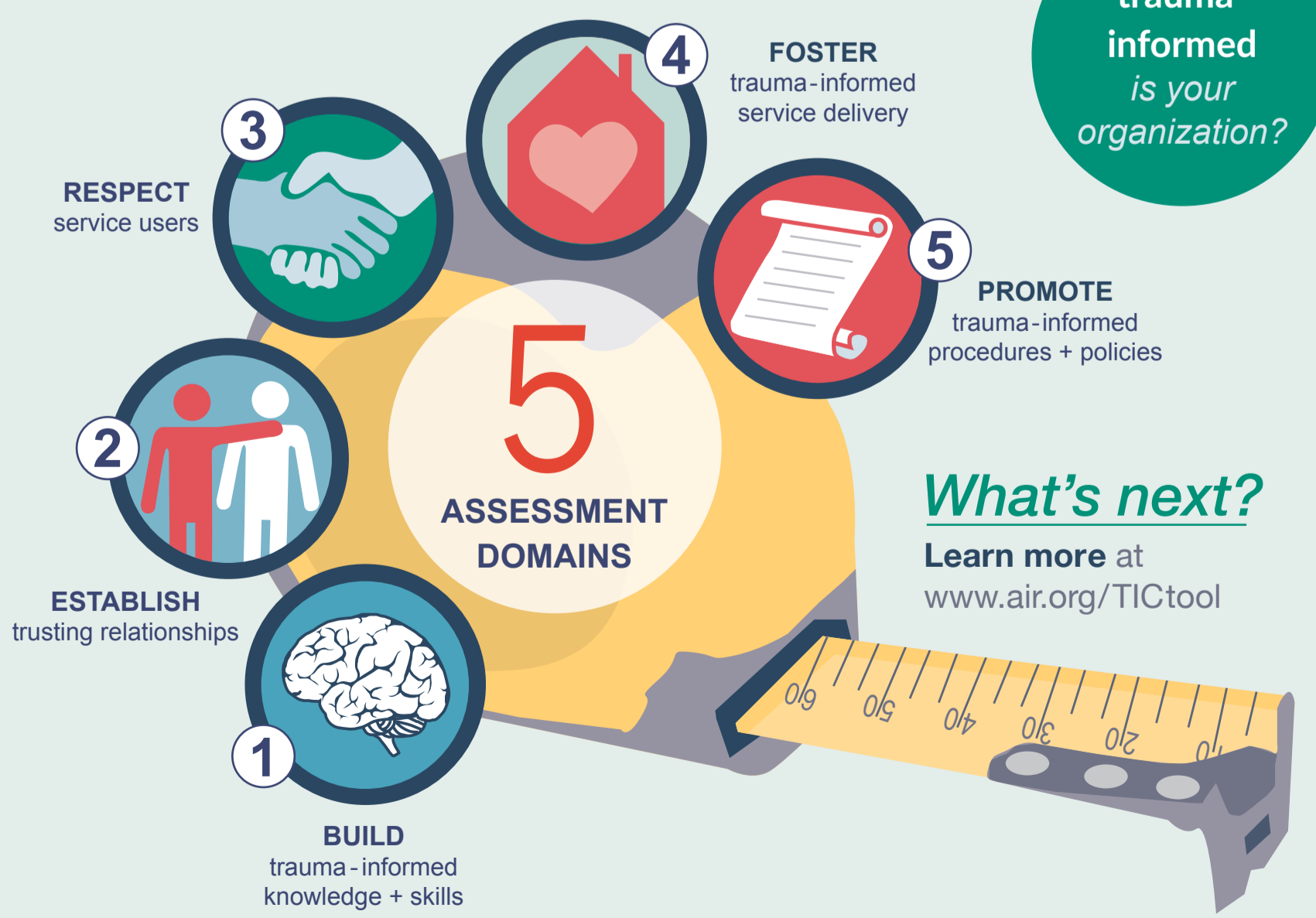
Systems that *recognize* the impact of trauma and *promote* resilience and healing



A First Step:

Agency-Wide Assessment

How trauma-informed is your organization?



What's next?
Learn more at www.air.org/TICtool

Sources: Green, Miranda, Daroowalla, & Siddique, 2005; Havens, Gudine, Diamond, Weis, & Cloitre, 2012; Hayes, Zonneville, & Bassuk, 2013; Abram, Teplin, Charles, Longworth, McClellan, & Dulcan, 2004; Dierkhising, Ko, Woods-Jaeger, Briggs, Lee, Pynoos, 2013; SAMHSA/CSAT, 2000; Greeson, Briggs, Kisiel, Layne, Ake, Ko . . . & Fairbank, 2011